



FAQs

HOW MANY UNITS WILL THERE BE?

Midrise (7 stories): 75 units: 65 one-bedroom units, 10 two-bedroom units;
Marist College: 8 one-bedroom units.

HOW LARGE ARE THE UNITS?

One-bedroom units are between 630-700 square feet;
Two-bedroom units are between 850-875 square feet.

WILL THERE BE PARKING?

Yes, there will be limited parking spaces, for a fee.

WHAT WILL THE UNITS HAVE IN THEM?

Full kitchen with range, refrigerator, dishwasher, disposal, central air conditioning, ceiling fans, window and coverings.

WILL THE UNITS INCLUDE LAUNDRY MACHINES?

The Midrise building will not have laundry machines in unit. However, each floor will have a laundry room. The historic College will have laundry machines in unit.

WILL IT HAVE A COMMUNITY ROOM?

The Midrise will have a community room on the 7th floor and gathering areas every other floor. The community room in the Marist College will be located in the basement and will include a full kitchen. All community spaces are available for use by residents of both buildings.

WILL IT HAVE A GYM?

There will be a gym in the Midrise building on the 7th floor.

WILL THERE BE ANY CLASSES, ACTIVITIES OR SUPPORTIVE SERVICES?

There will be financial literacy classes, computer training, health promotion/disease prevention/wellness classes, blood pressure/health screenings, food pantry, and free membership to Armory Senior Center.

WILL TRANSPORTATION BE INCLUDED?

Yes. A van will be provided for both buildings.

MIDRISE

111 SOUTH CHURCH AVENUE, TUCSON, AZ 85701

(520) 231-1121 | www.MaristTucson.com

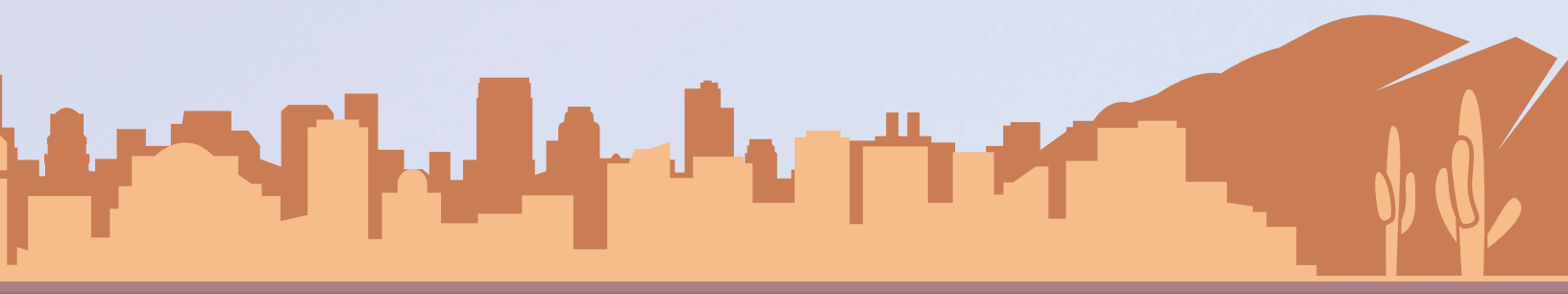


Information subject to change without notice.

COLLEGE

235 SOUTH CHURCH AVENUE, TUCSON, AZ 85701





FAQs (continued)

WHAT WILL THE RENT BE?

The Marist is a Low Income Housing Tax Credit Properties (LIHTC) property. It is not subsidized but offers rents lower than area market rents based on income eligibility.

WILL UTILITIES BE INCLUDED IN THE RENT?

Yes. Water, sewer, trash, electric, and internet are included. Cable and phone are the responsibility of the tenant.

WHAT ARE THE AGE RESTRICTIONS?

Seniors 62+ years old.

WHEN WILL THE PROJECT BE COMPLETE AND READY FOR MOVE-IN?

Winter 2018. Exact date TBD.

MIDRISE

111 SOUTH CHURCH AVENUE, TUCSON, AZ 85701



(520) 231-1121 | www.MaristTucson.com

COLLEGE

235 SOUTH CHURCH AVENUE, TUCSON, AZ 85701



Information subject to change without notice.